

## 1990 North Star Ice Flake Ice Maker Model 10

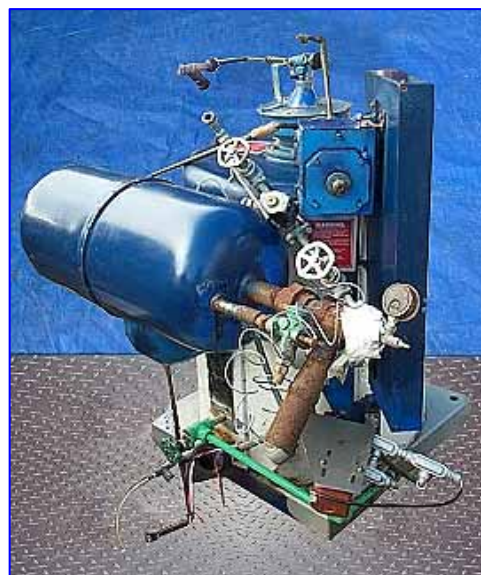
Mfg: North Star Ice

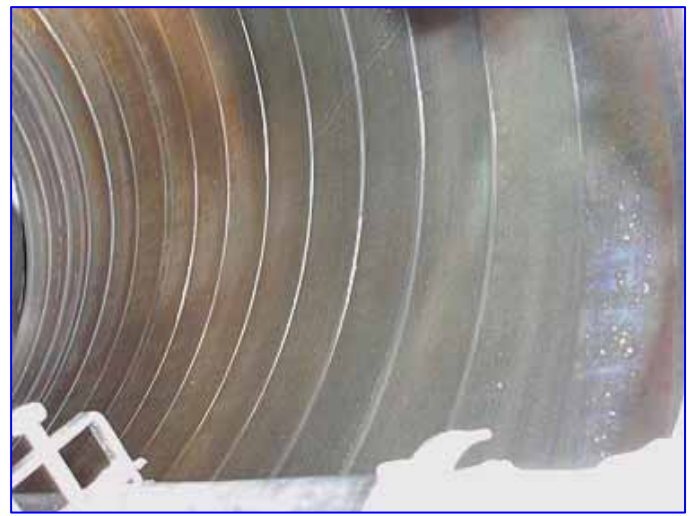
Model: M109S04

Stock No.: DFPC399.31

Serial No.: 6316

1990 North Star Ice Flake Ice Maker. Model: M109S04. S/N: 6316. Capacity: 4.7 tons/day at -25 °F evaporator temperature and 60 °F water supply temperature. Refrigerant: Freon 22. MAWP @ 300 °F: 150 psi. MDMT @ 150 psi: -20 °F. Head thickness: 0.75 in. Shell thickness: 0.25 in. Coastline Refrigerant Receiver Tank, MAWP @ 650 °F: 150 psi, MDMT @ 150 psi: -20 °F. Leeson Motor, 1/3 hp, 1140 rpm, 208-230/460 V, 0.8 amps, 60 Hz, 3 phase. Electra Dresser Motor Drive, 50 ratio, 22.8 rpm (final). Makes ice from fresh water, seawater or other liquids. 304-grade stainless steel water path components make the unit approved for use in USDA-inspected meat and poultry plants and for other food processing applications. Inlets: (1) 1/2 in. dia. pipe (water), (1) 1-1/2 in. dia. Pipe (media). Outlets: (1) 3/4 in. dia. pipe (media), (1) 2-1/2 in. dia. Pipe (waste water), (1) 18 in. dia. discharge. Overall dimensions: 48 in. L x 38 in. W x 48 in. H.





## North Star flake ice is the most effective and economical choice for your cooling needs:

**Faster cooling:** North Star flake ice has more than 17,000 square feet of surface area per ton of ice, providing greater cooling efficiency than any other ice. Other types of ice, such as tube, plate, shell or crushed, offer only 4,250 to 13,500 square feet of cooling surface area per ton of ice.

**Thorough product mixing:** North Star flake ice melts rapidly to dissipate heat and add moisture to mixtures, aiding the blending process, and will not damage blending equipment.

**Better product coverage:** Flake ice is formed in flat flakes which flow more freely and provide greater contact area than any other type of ice.

**Greater product protection:** North Star flake ice remains dry, packs well and cushions products against damage. Its flat shape will not create indentations in perishable products.

**Easier storage and distribution:** North Star flake ice is completely dry, so it will not rapidly fuse together in a low-temperature storage bin or clog screw conveyors or pneumatic delivery systems.

**Cost-effective production:** Flake ice is the most economical ice to produce, requiring only 1.3 tons of refrigeration per ton of ice from 60°F (16° C) water.

**Cooling Surface Area Per Ton of Ice**

