

**FMC Food Tech / Frigoscandia Spiral Freezer - 53 in.**

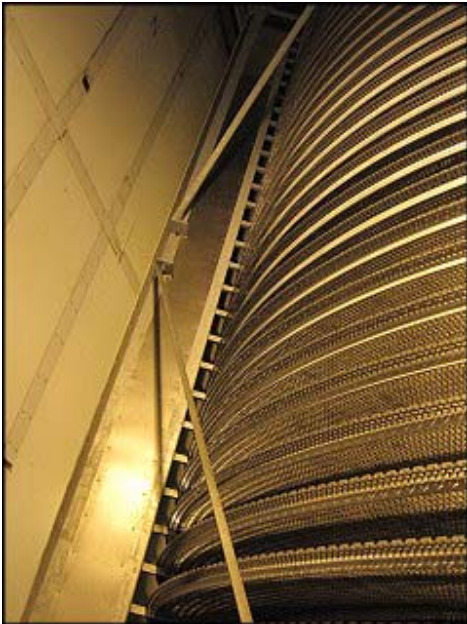
**Mfg: FMC Food Tech / Frigoscandia**

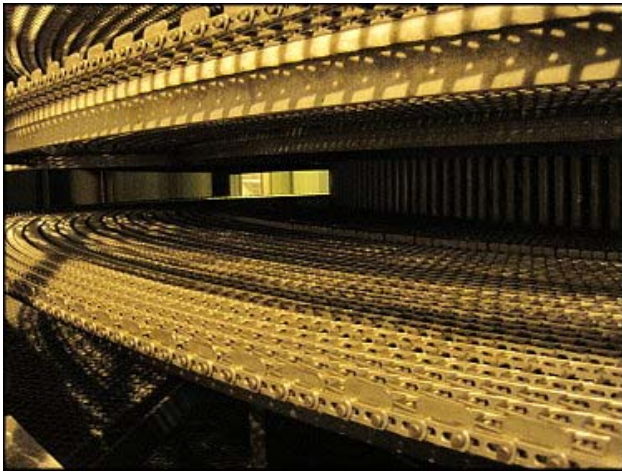
**Model: N53152**

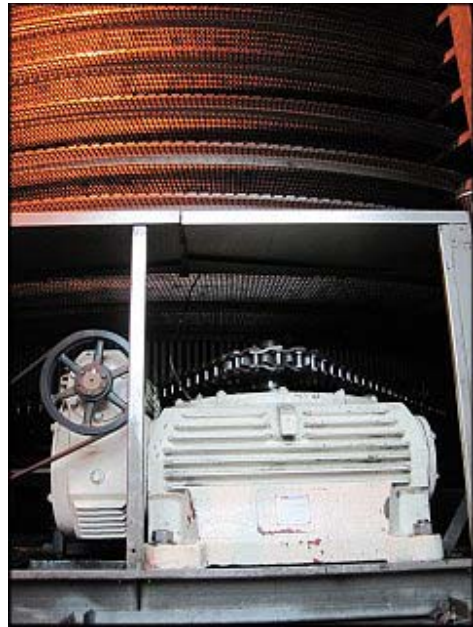
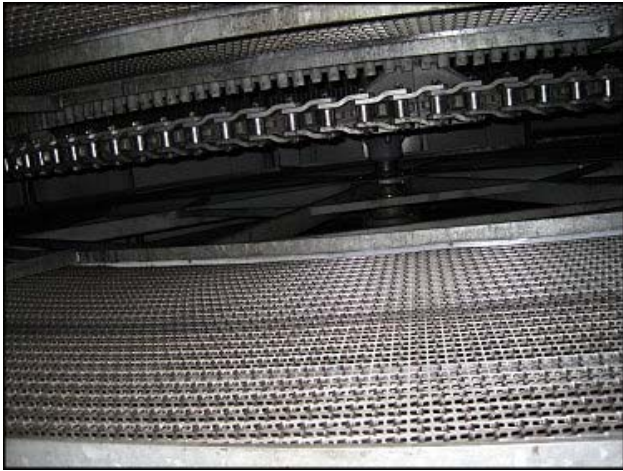
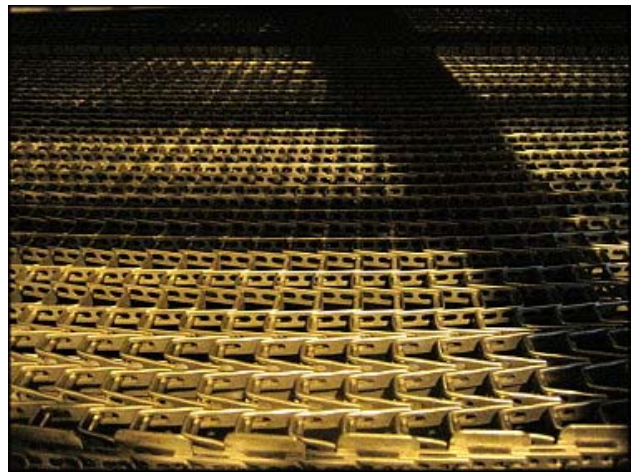
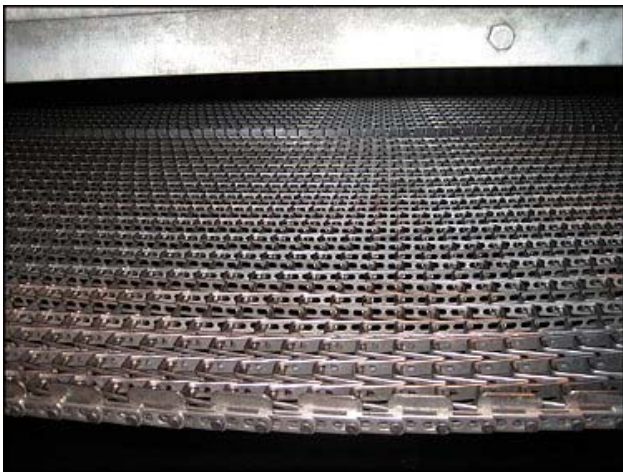
**Stock No: HDDG220.450**

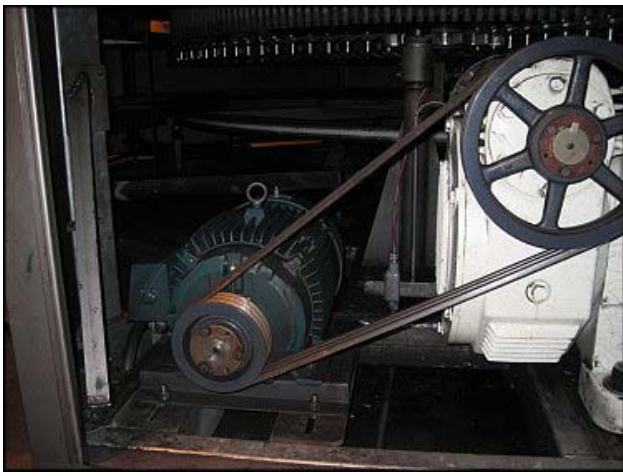
**Serial No: 3152**

Currently installed at Dreyers Ice Cream in Houston, Texas. FMC Food Tech / FrigoScandia Job No.: N53152. S/N: 3152. Former application included 1-1/2 qt. ice cream containers running on two, separate lines at 70 units a minute into the hardener with respective ingoing and outgoing temperatures of 35°F and -15°F. Product dwell time was 90 minutes. Power: 460V 60 Hz 3-phase. Evapco Model: TFC16 467103-15M. Evapco Serial Number: 5-124191 A,B,C,D. Rated for 240 tons at 10.5°F TD for a room with a temperature of -29.5°F and -40°F saturated suction temperature using bottom feed, recirculated ammonia with a liquid feed temperature of -40°F. (4) stacked, finned coils feature the exclusive Thermal-Pak® design with 467.08 sq. ft. face area and 1227 cu. ft. coil volume. Fins are 10 rows deep at 3 fpi. Includes hot gas defrost for coil and pan. Evapco Coil Test Pressure: 250 PSIG. (16) 15 hp, 36 in. diameter fans, 1750 rpm, 460 V, 3 phase, 60 Hz. Total cfm: 363,968 at 779 FPM face velocity. FMC 25 HP Gear Reducer Drive. Allen Bradley Controls. Belt: 52 inch wide, two-zone, stainless steel. Product Clearance: 7.5 inches.



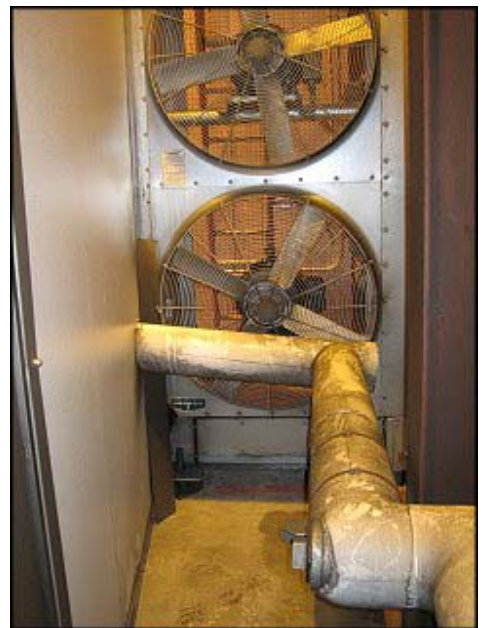




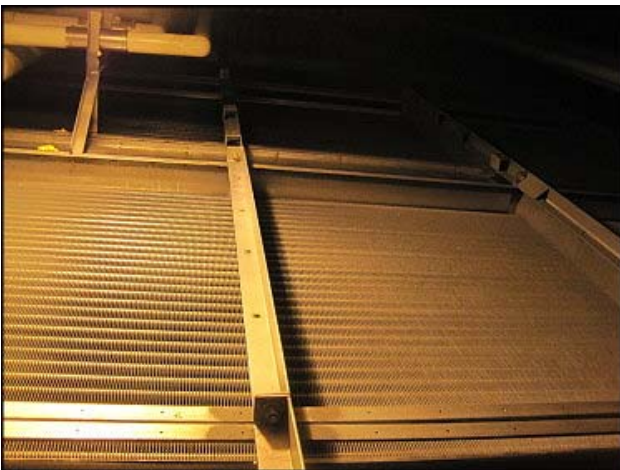




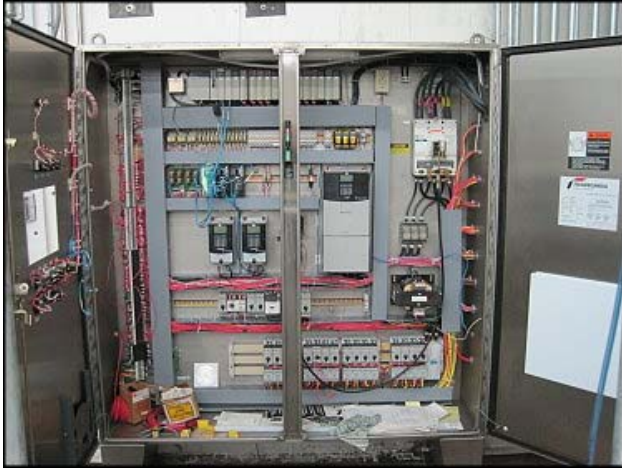












**FRIGOSCANDIA**  
EQUIPMENT 19004261083

A BUSINESS OF **FMC FOOD TECH**

JOB NAME DRYERS  
JOB NO. N53152  
MFG. DATE 06/22/05  
SERIAL NO. 3152  
WIRING DIAGRAM NO. 3152-1457  
VOLTAGE 460 PH. 3  
HERTZ 60 AMPS 422.8  
AMP RATING OF LARGEST MOTOR 34  
DISCONNECT INTERRUPTING CAPACITY 10 KA

**WARNING**

USE OF THE FOLLOWING COMPONENTS IS DEPENDENT UPON THE ADDITIONAL PROTECTION AFFORDED BY THE GROUND FAULT CIRCUIT INTERRUPTER AND THE OVER CURRENT PROTECTIVE DEVICE PROVIDED.

DO NOT REMOVE OR DEFEAT THESE PROTECTIVE COMPONENTS.

COMPONENT DESIGNATION	COMPONENT MANUFACTURE	CATALOG DESIGNATION	NUMBER USED
PORTABLE LAMP	AFC	TUQ120W710	1
P2-3400	PHOENIX	PROBES	1
P2-3445	PHOENIX	PROBES	1

GROUND FAULT TESTING DATE

**FMC FoodTech**  
FMC FOODTECH

SERIAL NUMBER		RECOMMENDED MOBIL LUBRICANTS	
TEMP °F	TEMP °C	SAE	GREASE
40 TO 0	-40 TO -18	SAE 100	
0 TO 50	-18 TO 10	SAE 150	MOBILITH SHC 220
50 TO 104	10 TO 40	SAE 220	
104 TO 180	40 TO 82	SAE 320	

OPERATOR MAY RUN ONE HOUR PER DAY AT 180°F (82°C).  
FOR MORE THAN 1 HOUR OPERATION AT 180°F (82°C) OR HIGHER DESIGN TEMPERATURES, CHANGE OIL TO RECOMMENDED TYPE IN ABOVE TABLE. REFER TO INSTRUCTIONS FOR RECOMMENDED LUBRICATION SCHEDULE AND TO OIL GLASS.

**WARNING** - SELECT, INSTALL, OPERATE AND MAINTAIN IN ACCORDANCE WITH FMC FOODTECH INSTRUCTION BOOKS. DO NOT ATTEMPT TO OIL CHANGE. OIL CHANGING COULD RESULT IN SEVERE INJURY OR DEATH.

**FRIGOSCANDIA**  
EQUIPMENT 19004261083

A BUSINESS OF **FMC FOOD TECH**

**WARNING**

USE OF THE FOLLOWING COMPONENTS IS DEPENDENT UPON THE ADDITIONAL PROTECTION AFFORDED BY THE GROUND FAULT CIRCUIT INTERRUPTER AND THE OVER CURRENT PROTECTIVE DEVICE PROVIDED.

DO NOT REMOVE OR DEFEAT THESE PROTECTIVE COMPONENTS.

COMPONENT DESIGNATION	COMPONENT MANUFACTURE	CATALOG DESIGNATION	NUMBER USED
PORTABLE LAMP	AFC	TUQ120W710	1
P2-3400	PHOENIX	PROBES	1
P2-3445	PHOENIX	PROBES	1

GROUND FAULT TESTING DATE

**FRIGOSCANDIA**  
EQUIPMENT 19004261083

A BUSINESS OF **FMC FOOD TECH**

**WARNING**

USE OF THE FOLLOWING COMPONENTS IS DEPENDENT UPON THE ADDITIONAL PROTECTION AFFORDED BY THE GROUND FAULT CIRCUIT INTERRUPTER AND THE OVER CURRENT PROTECTIVE DEVICE PROVIDED.

DO NOT REMOVE OR DEFEAT THESE PROTECTIVE COMPONENTS.

COMPONENT DESIGNATION	COMPONENT MANUFACTURE	CATALOG DESIGNATION	NUMBER USED
PORTABLE LAMP	AFC	TUQ120W710	1
P2-3400	PHOENIX	PROBES	1
P2-3445	PHOENIX	PROBES	1

GROUND FAULT TESTING DATE

**RELIANCE ELECTRIC**  
DUTY MASTER

HP 25  
RPM 1770  
EFLA TEFC  
VOLTS 230/460  
AMPS 59.4/29.7  
DUTY CONT.  
CONTINUOUS EFFICIENCY 93.6  
MAX. EFFICIENCY 93.0  
MAX. POWER 06.0  
POWER FACTOR 84.3  
MOTOR WEIGHT 105 LBS.

FRAME TYPE DESIGN IDENTIFICATION NO. MODEL NO.  
384T P B 6811383-DH

PHASE 3 CODE 0  
AMB 40 °C  
SUIT FOR PWM INVERTER POWER  
35-500HZ CT @ 1.0 SE & LOW TEMP GREASE

RELIANCE ELECTRIC INDUSTRIAL CO. MADE IN U.S.A.

**Dreyer's**

Asset: 79247600 Location: LINE # 5  
Serial: Description: ET G LINE 5 - SPIRAL  
Model:  
Manu:  
Oracle: 79247600

