

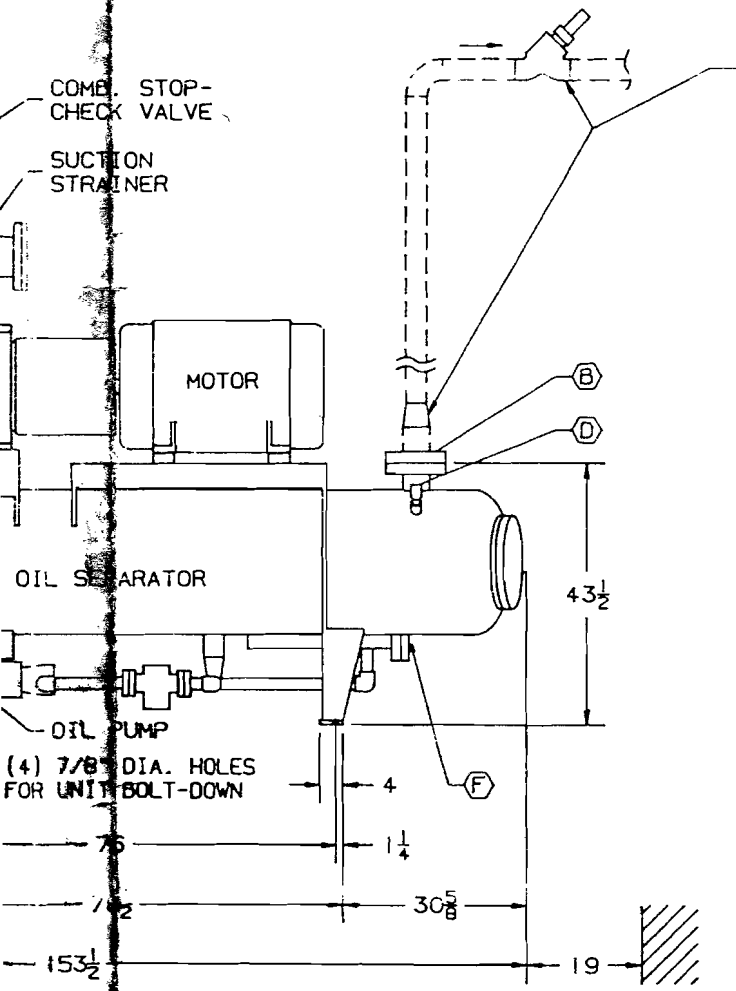
OIL PUMP MOTOR DATA		
HP	VOLTAGE	SPEED (RPM)
3/4	230/460	1800

CONNECTION SCHEDULE			
I.D.	SIZE	CONNECTION	FUNCTION
A	SEE CHART A	BUTT WELD (SCH. 40)	SUCTION INLET
B	4"	ANSI 300* SLIP-ON FLANGE	DISCHARGE OUTLET
C	1-1/2"	VILTER FEM. S.WELD FLG.	HI-PRESS. LIQUID INLET
D	AMM. 1/2"	NPT (FEMALE)	PRESSURE RELIEF
	HALO. 1"	NPT (FEMALE)	PRESSURE RELIEF
E	1/2"	NPT (FEMALE)	OIL DRAIN
F	1/4"	NPT (FEMALE)	OIL DRAIN
G	1/4"	NPT (FEM. PLUGGED)	FILTER TANK VENT
H	1/4"	NPT (FEMALE)	OIL CHARGING
J	1/4"	NPT (FEMALE)	TRANSDUCER BLOCK/BLEED
K	1-1/2"	ANSI 300* R.F. FLANGE	ECONOMIZER PORT

THESE CONNECTIONS ARE OPTIONAL.  
 DUAL RELIEF VALVE ASSEMBLY TO BE SHIPPED LOOSE.  
 AMMONIA VALVES SET AT 250 PSIG. (1" NPT FEM. OUTLETS)  
 HALO. VALVES SET AT 300 PSIG. (1" NPT FEM. OUTLETS)

DISCHARGE STOP-CHECK VALVE TO BE SHIPPED LOOSE.  
 MOUNT AS CLOSE TO CONDENSER AS POSSIBLE.  
 VALVE IS SIZED PER OPERATING CONDITIONS.  
 A REDUCER WILL BE SUPPLIED BY VILTER IF REQUIRED.  
 PIPING TO BE SUPPLIED BY CUSTOMER.

ALL DIMENSIONS ARE IN INCHES.



OIL LINE SIZE	OIL CHARGE (BY CUSTOMER) U.S. GALS. (LBS.)	
	SINGLE FILTER	DUAL FILTERS
1.5"	46 (345)	51 (385)
2"	49 (370)	57 (430)

COMPRESSOR SIZE	SUCT. LINE SIZE	DIMENSIONS (INCHES)		
		AA	BB	CC
VSS-451/601	4"	74-7/8	86-7/8	2-1/2
	5"		90	6-3/4
	6"	76-7/8	94-1/8	11-3/4
VSS-751/901	5"	77-7/8	93	8-3/8
	6"	79-7/8	97-1/8	13-3/8

CLEARANCE REQUIRED TO REMOVE OIL SEP. ELEMENTS

DATA	OPERATING CONDITIONS					
	COMPRESSOR CAPACITY		SUCTION		CONDENSING	
	TONS	BHP	TEMP. °F	PRESS. PSIG/	TEMP. °F	PRESS. PSIG/
50						
160	214.7	227.9	20	33.5	95	181.1
440						

CONFIDENTIAL PROPERTY OF

**Vilter**® MANUFACTURING CORPORATION  
 MILWAUKEE, WISCONSIN 53207

DRAWN BY: PM SCALE: NONE DATE: 12-07-92  
 TITLE: VSS UNIT GENERAL DIMENSIONS  
 FOR: VSS-451 THRU VSS-901 HI-STAGE UNITS WITH  
 24" OIL SEP. & 1 HP "V-PLUS" OIL COOLING

ORDER NO. H20569-2 **27014R1**

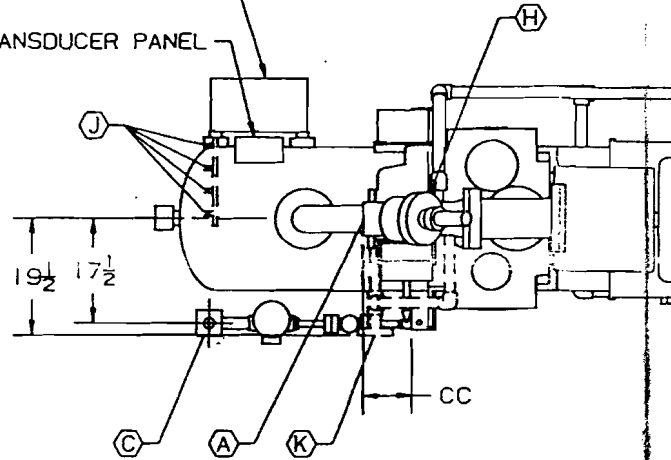
COMPRESSOR SIZE	OIL LINE SIZE	SUCTION LINE SIZE	SHIPPING WEIGHT (LESS MOTOR) (LBS.)	WEIGHT ADDITION FOR OPTIONS (LBS.)	
				DUAL FILTERS	ECONOMIZER PORT
VSS-451/601	1.5"	4"	4,700	220	50
		5"	4,760		
		6"	4,850		
VSS-751/901	1.5"	5"	5,440	265	50
		6"	5,530		
	2"	5,480			
		6"	5,570		

TO DETERMINE OPERATING WEIGHT, ADD SHIPPING WEIGHT, WEIGHT FOR OPTIONS, MOTOR WEIGHT AND OIL CHARGE WEIGHT

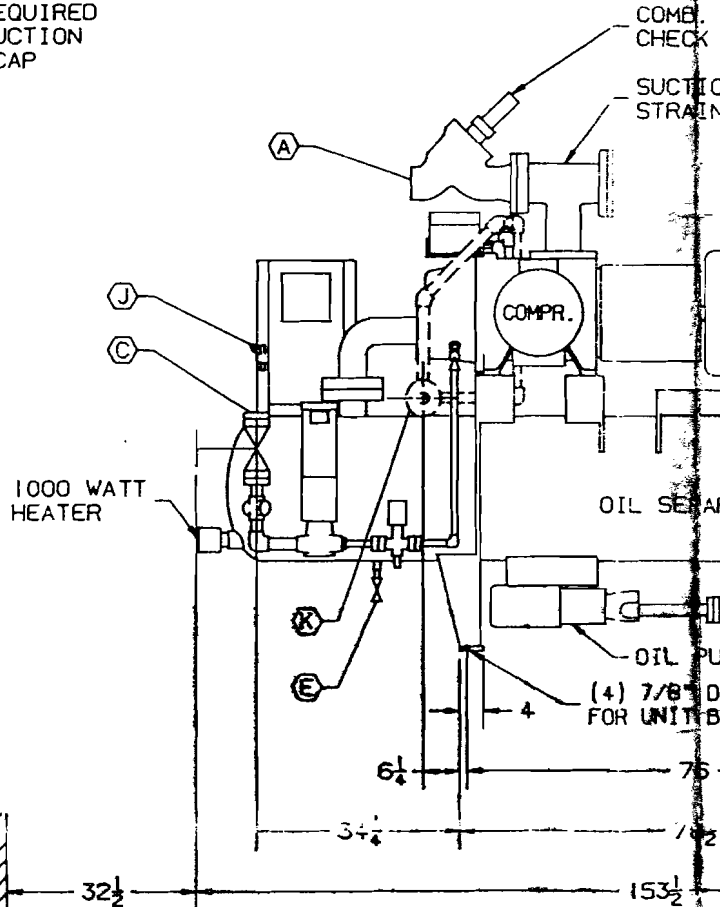
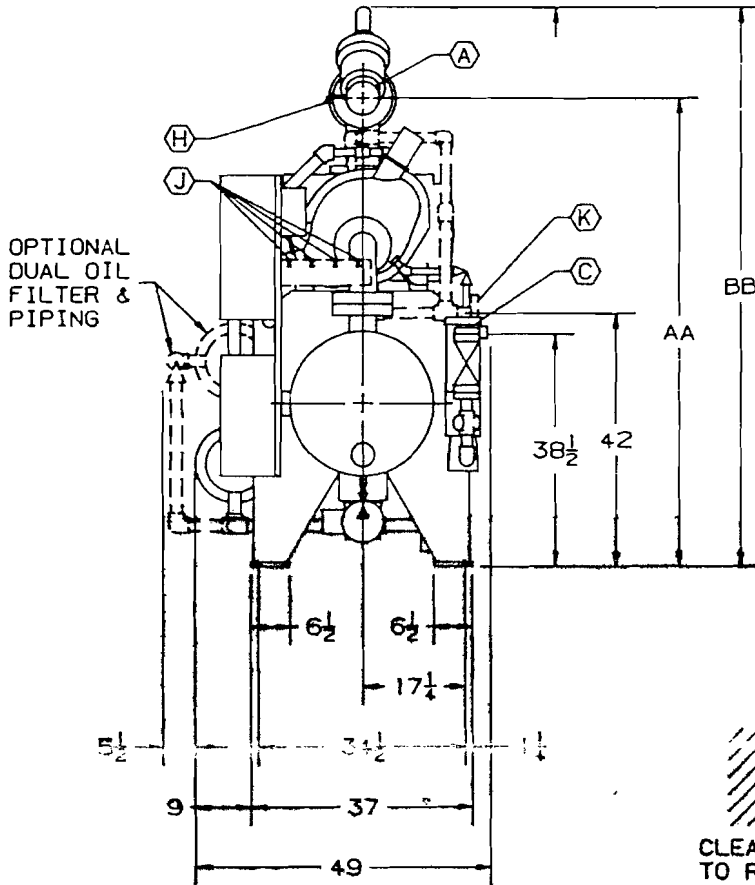
MICROPROCESSOR & "V-PLUS" SPEED CONTROL PANELS

PIPING FOR OPTIONAL DUAL OIL FILTER

TRANSDUCER PANEL



$4\frac{5}{8}$  CLEARANCE REQUIRED TO REMOVE SUCTION VALVE SEAL CAP



CLEARANCE REQUIRED TO REMOVE HEATER

CHART A

COMPR. SIZE	SUCT. LINE SIZE	OIL LINE SIZE	OPTIONS		MOTOR DATA
VSS-451	4" <input checked="" type="checkbox"/>	1.5" <input checked="" type="checkbox"/>	BLOCK/BLEED V.V.S.	<input checked="" type="checkbox"/>	HP 250
VSS-601	5" <input checked="" type="checkbox"/>	2" <input checked="" type="checkbox"/>	DUAL FILTERS	<input checked="" type="checkbox"/>	RPM 3600
VSS-751	6" <input checked="" type="checkbox"/>	<input checked="" type="checkbox"/>	ECONOMIZER	<input checked="" type="checkbox"/>	VOLTS 460
VSS-901	<input checked="" type="checkbox"/>	<input checked="" type="checkbox"/>	YES	NO	WEIGHT (LBS.) 1,440
<input checked="" type="checkbox"/>	<input checked="" type="checkbox"/>	<input checked="" type="checkbox"/>	<input checked="" type="checkbox"/>	<input checked="" type="checkbox"/>	

©VILTER MANUFACTURING CORPORATION. AN UNPUBLISHED WORK. THIS DRAWING CONTAINS CONFIDENTIAL INFORMATION PROPRIETARY TO VILTER MANUFACTURING CORPORATION. UNAUTHORIZED COPYING OR USE PROHIBITED. ALL RIGHTS RESERVED.