

I.J. White Spiral Freezer

Mfg: I.J. White

Model:

Stock No: MDFP122B

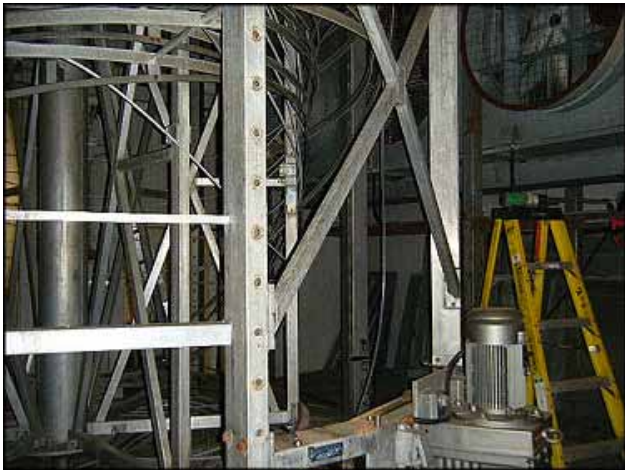
Serial No:

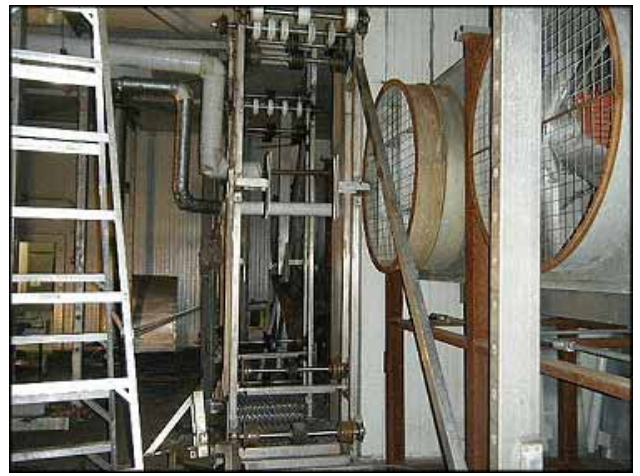
I.J. White Spiro-Freeze Spiral Freezer. W / Bolted Construction, Bottom Load "Up Go" Design. Belt dimensions: 850 ft. L x 26 in. W x 3-1/4 in. H. (*NOTE: Spiral with Uninstalled Belt). Belt material: stainless steel. Drum frame model: 26-AL-579-F-B. Drum size: Est. 14 ft. Dia. Number of tier: 18. Drum frame material: Aluminum. Belt speed: 90 FPM. Dwell time: 17 Min. Main drum drive motor – 7.5 hp, 300-1800 rpm, 230/460 V, 8.6/4.3 amps, 60 Hz, 3 phase. Sew euro drive. Ratio: 115.63, Out: 2.6 – 16 rpm, In: 300-1800 rpm, Torque: 31,777. Out feed motor – 2.0 hp, 1735 rpm, 208-230/460 V, 6.5-6.2/3.1 amps, 60 Hz, 3 phase.

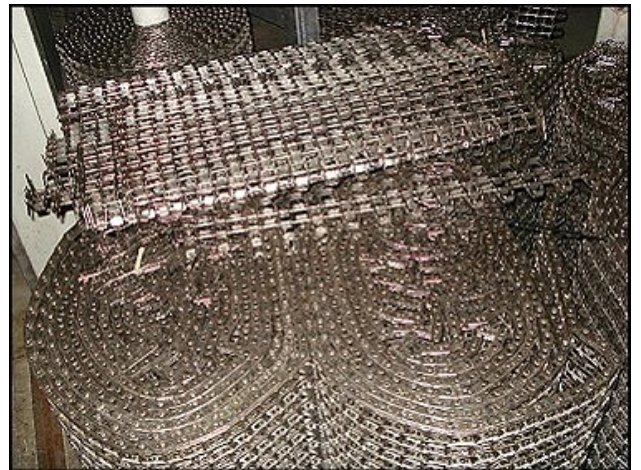
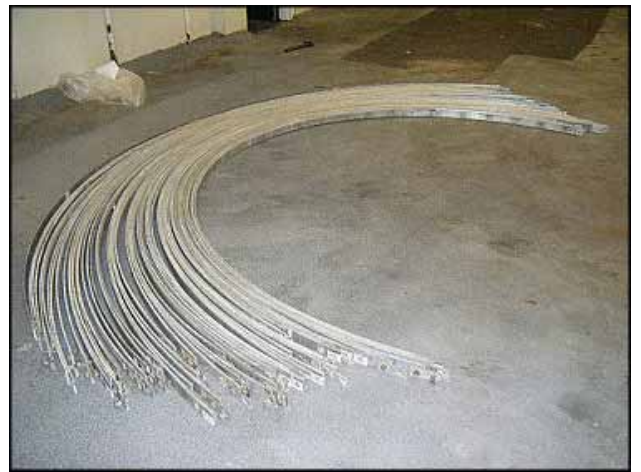
Installed:



Dismantled:









CATALOG # E190		TYPE UTP	
FR 145T	PH 3	MAX 40 °C ID# L04-E190A-M	ENCLOSURE
MAX 40 °C	DUTY CONT.	WT	BAL
HZ 60	HP 2.0	RPM 1725	HZ 60 HP 1.50
SF 1.25	DESIGN C	CODE L	DESIGN
GUARANTEED EFFICIENCY	MAX KVAR		GUARANTEED EFFICIENCY
NEMA NOM. EFFICIENCY 82.5	NPM		78.5
VOLTS 208-230/460			VOLTS 190/380
FLAMPS 6.5-6.2/3.1			FLAMPS 5.5/2.8
SF AMPS 7.4/3.7			SF AMPS
AMP MAX AT 208V 60HZ 7.1		EMERSON MOTOR COMPANY	
MADE IN MEXICO		ST. LOUIS, MO	
EMERSON		EMERSON	
499164-008		499164-008	

