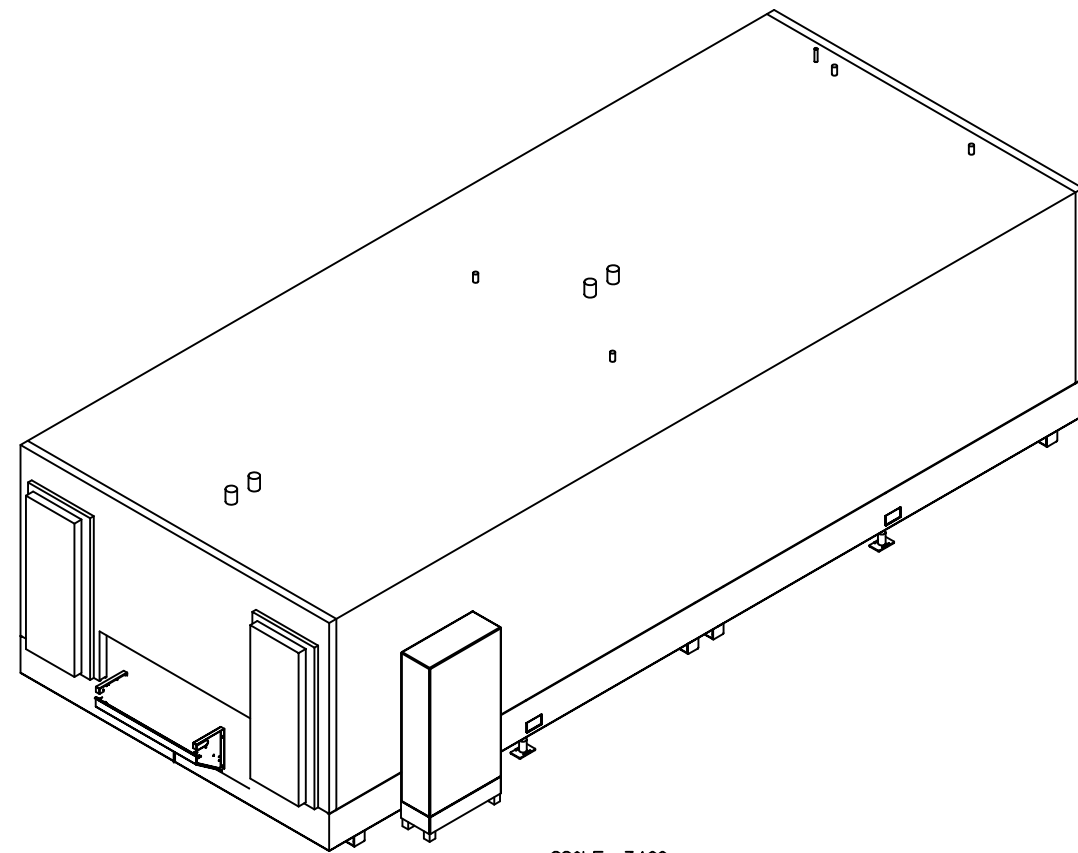
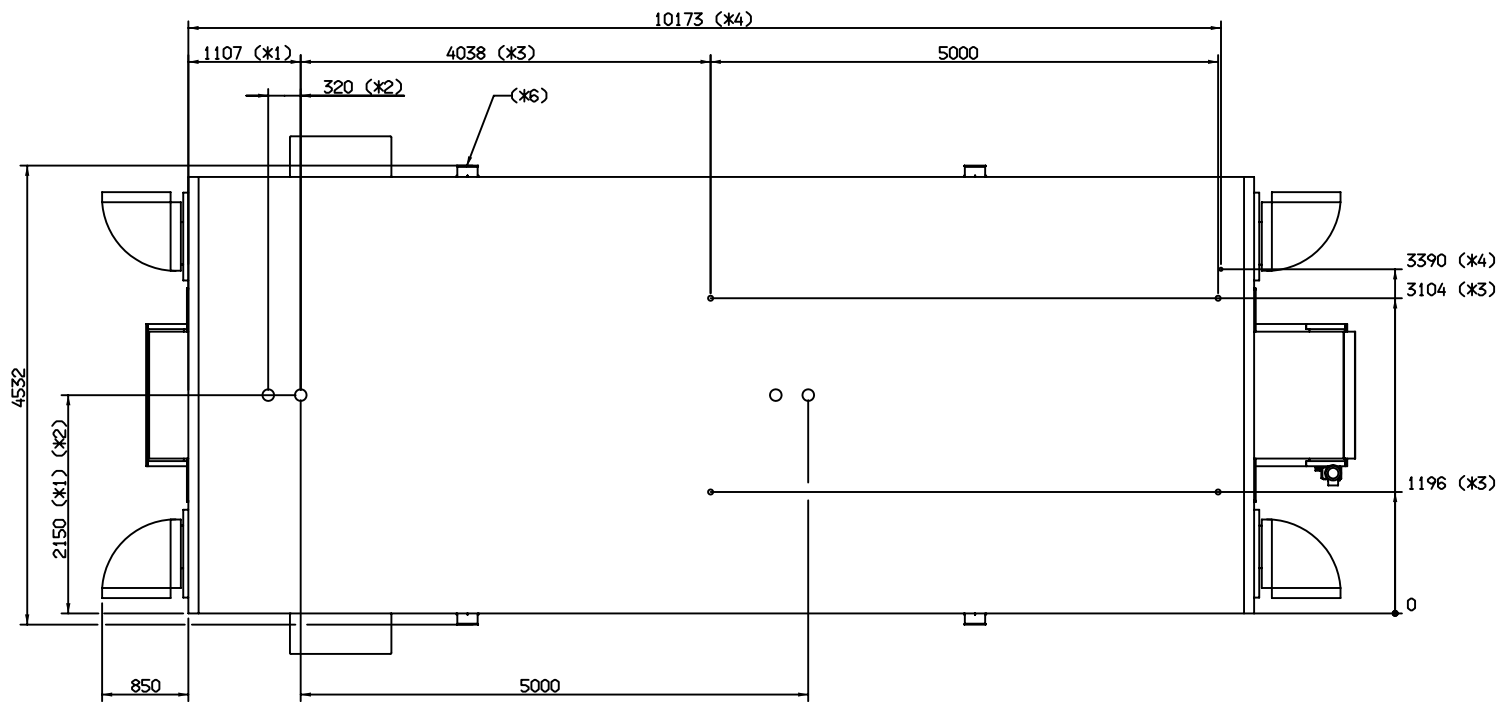
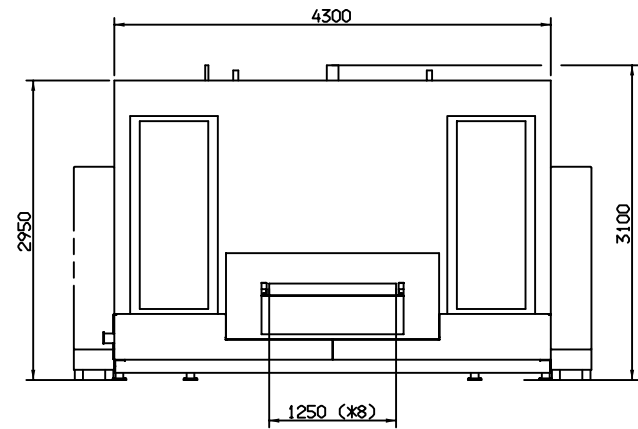
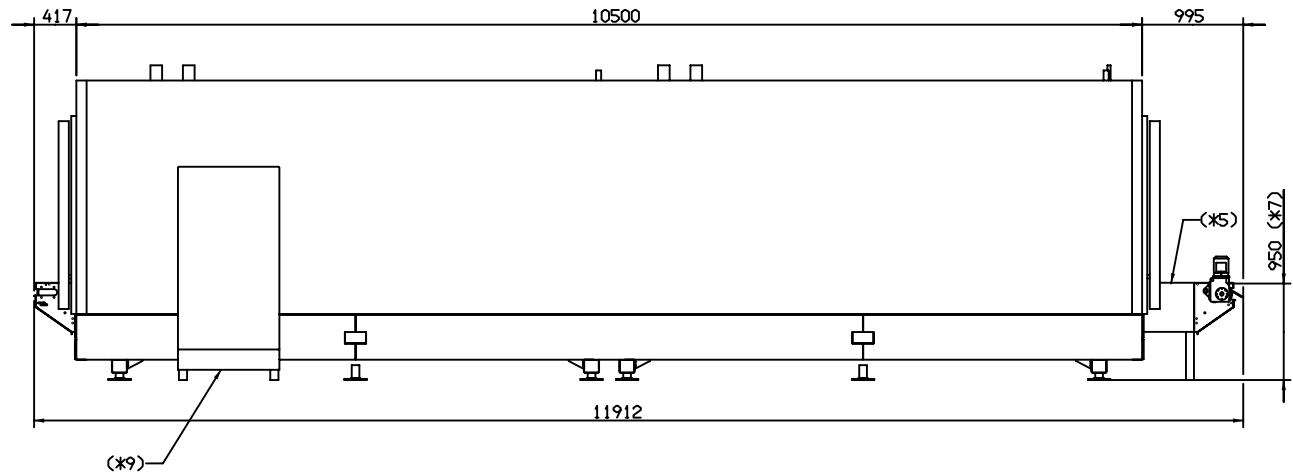


REV	DESCRIPTION	YEAR	MONTH	DAY	SIGN
0					



DO NOT SCALE IF IN DOUBT ASK

TOTAL WEIGHT:	16 TON
	EQUALLY DIVIDED ON 2x2 BEAMS, WHERE EACH BEAM HAS 2 LEGS.
	LEGS AT DRAIN HOLES (*6) DO NOT CARRY ANY LOAD.

REFRIGERANT- AND WATER CONN. EVAPORATOR	
LVS:	NO
*1 OUTLET PIPE DIMENSION:	2 PCS Ø114.3
*2 INLET PIPE DIMENSION:	2 PCS Ø114.3
TOTAL COIL VOLUME:	880 dm <sup>3</sup>

\*9 DIMENSION (WxHxD): 1000x2100x400 TO BE PLACED BETWEEN INFEED AND FIRST DRAIN OUTLET AT EITHER SIDE OF FREEZER.

STANDARD VIEWS AVAILABLE IN DXF-FORMAT

OTHER CONNECTIONS AND PARTS, FREEZER	
*3 DEFROST WATER PIPE DIMENSION: PRESSURE: MAX FLOW RATE: MAX WATER TEMP:	2x2 PCS R 2" 150 kPa 2x250 l/min +40° C
*4 INTERNAL BELT RINSE PIPE: DIMENSION: PRESSURE: MAX FLOW RATE: MAX WATER TEMP:	1 PCS R 1 1/4" 150 kPa 100 l/min +40° C
*5 EXTERNAL BELT RINSE PIPE: DIMENSION: PRESSURE: MAX FLOW RATE: MAX WATER TEMP:	
*6 DRAIN OUTLET: DIMENSION:	2x2 PCS 200x100
*7 BELT HEIGHT:	950 mm (TOP OF BELT)
*8 BELT WIDTH:	1250x1 mm (GROSS)

POS	ITEM NO	DATE	DESCRIPTION	QTY	DIMENSION	NOTE
DRAWN	K137	010619	ADVANTEC 2M-1800-1			Unless otherwise stated all tolerances should be according to FSE-NORM 0015
APPROVED						
SURFACE FINISH:						
FRIGOSCANDIA EQUIPMENT			DRAWING NUMBER		SHEET	SIZE
			171367		1	1
						VIEW CONVENTION